



This is a digital copy of a book that was preserved for generations on library shelves before it was carefully scanned by Google as part of a project to make the world's books discoverable online.

It has survived long enough for the copyright to expire and the book to enter the public domain. A public domain book is one that was never subject to copyright or whose legal copyright term has expired. Whether a book is in the public domain may vary country to country. Public domain books are our gateways to the past, representing a wealth of history, culture and knowledge that's often difficult to discover.

Marks, notations and other marginalia present in the original volume will appear in this file - a reminder of this book's long journey from the publisher to a library and finally to you.

Usage guidelines

Google is proud to partner with libraries to digitize public domain materials and make them widely accessible. Public domain books belong to the public and we are merely their custodians. Nevertheless, this work is expensive, so in order to keep providing this resource, we have taken steps to prevent abuse by commercial parties, including placing technical restrictions on automated querying.

We also ask that you:

- + *Make non-commercial use of the files* We designed Google Book Search for use by individuals, and we request that you use these files for personal, non-commercial purposes.
- + *Refrain from automated querying* Do not send automated queries of any sort to Google's system: If you are conducting research on machine translation, optical character recognition or other areas where access to a large amount of text is helpful, please contact us. We encourage the use of public domain materials for these purposes and may be able to help.
- + *Maintain attribution* The Google "watermark" you see on each file is essential for informing people about this project and helping them find additional materials through Google Book Search. Please do not remove it.
- + *Keep it legal* Whatever your use, remember that you are responsible for ensuring that what you are doing is legal. Do not assume that just because we believe a book is in the public domain for users in the United States, that the work is also in the public domain for users in other countries. Whether a book is still in copyright varies from country to country, and we can't offer guidance on whether any specific use of any specific book is allowed. Please do not assume that a book's appearance in Google Book Search means it can be used in any manner anywhere in the world. Copyright infringement liability can be quite severe.

About Google Book Search

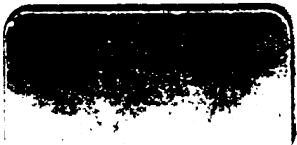
Google's mission is to organize the world's information and to make it universally accessible and useful. Google Book Search helps readers discover the world's books while helping authors and publishers reach new audiences. You can search through the full text of this book on the web at <http://books.google.com/>



Boston Art Club

Albert F. Schmitt exhibition

4283
B74



ALBERT FELIX SCHMITT



4283
B74

From the Library of the
Fogg Museum of Art
Harvard University

CATALOGUE



The Artist

THE
ALBERT FELIX SCHMITT
EXHIBITION



HELD AT THE GALLERIES OF
THE BOSTON ART CLUB

JANUARY 12 TO FEBRUARY 3

1921

Gift. 117.A.
16 Mar 82

**FOGG MUSEUM LIBRARY
HARVARD UNIVERSITY**

4283

B74

The Merrymount Press - Boston

OIL PAINTINGS

1. SYMPHONY IN BLUE

Painted in 1904. Exhibited: Boston Art Club, 1905; Copley Society, 1905; Art Institute, Chicago, 1907; Pennsylvania Academy, 1907; Rhode Island School of Design, 1913; Traveling Exhibition Guild of Boston Artists, 1916. Similar subject in water color owned by City Art Museum, St. Louis, Mo.

Size 16" × 20". Signed lower right.

2. THE CAPRI BOWL

Painted in 1919. Exhibited: M. Knoedler & Co., New York, in Exhibition of the Artist's work, 1920.

Size 45" × 50". Signed lower left.

3. IN THE TRAIN

Painted in 1916. Exhibited: Grace Horne's Gallery, Boston, 1920; Boston Art Club, 1920.

Size 30" × 36". Signed upper left.

4. THE BLUE VEIL

Painted in 1916. Exhibited: Guild of Boston Artists in Exhibition of the Artist's work, 1918; M. Knoedler & Co., New York, in Exhibition of the Artist's work, 1920.

Size 24" × 29". Signed upper left.

5. RED AND GOLD

Painted in 1913. Exhibited: Guild of Boston Artists, 1915; Boston Art Club, 1915; Museum of Fine Arts, Boston, 1917; M. Knoedler & Co., New York, in Exhibition of the Artist's work, 1920.

Size 24" × 29". Signed lower left.

6. THE PEARL NECKLACE

Painted in 1917. Exhibited: Guild of Boston Artists in Exhibition of the Artist's work, 1918; M. Knoedler & Co., New York, in Exhibition of the Artist's work, 1920.

Size 33" x 40". Signed lower right.

➤ **7. PORTRAIT (WIFE OF THE ARTIST)**

Painted in 1918. Exhibited: Guild of Boston Artists in Exhibition of the Artist's work, 1918; M. Knoedler & Co., New York, in Exhibition of the Artist's work, 1920.

Size 33" x 46". Signed lower left.

8. ON THE PIAZZA

Painted in 1916. Exhibited: M. Knoedler & Co., New York, in Exhibition of the Artist's work, 1920; Grace Horne's Gallery, Boston, 1920; New London, Conn., 1920.

Size 25" x 30". Signed lower right.

9. BRIDE AND GROOM No. I

Painted in 1915. Exhibited: Guild of Boston Artists in Exhibition of the Artist's work, 1915; M. Knoedler & Co., New York, in Exhibition of the Artist's work, 1920.

Size 31½" x 36". Signed lower right.

10. OLD TREES, DIGBY, N. S.

Painted in 1916. Exhibited: Guild of Boston Artists in Exhibition of the Artist's work, 1918; Rhode Island School of Design, 1918; Worcester Art Museum, 1918.

Size 24" x 29". Signed lower right.

11. A SUMMER IDYL

Painted in 1912. Exhibited: Copley Gallery, Boston, in Exhibition of the Artist's work, 1913; Rhode Island School of Design, 1914; Traveling

Exhibition Guild of Boston Artists, 1916; Pennsylvania Academy, 1917; M. Knoedler & Co., New York, in Exhibition of the Artist's work, 1920.

Size 33" × 40". Signed lower right.

12. BOYS BATHING

Painted in 1914. Exhibited: Guild of Boston Artists, 1914; M. Knoedler & Co., New York, in Exhibition of the Artist's work, 1920; Grace Horne's Gallery, Magnolia, 1920.

Size 24" × 29". Signed lower left.

13. THE BENARES TRAY

Painted in 1920. Never before exhibited.

Size 27" × 34". Signed lower right.

14. VENETIAN GLASS (DECORATIVE PANEL)

Painted in 1918. Exhibited: Guild of Boston Artists in Exhibition of the Artist's work, 1918.

Size 45" × 50". Signed lower right.

15. OLD CHERRY TREE

Painted in 1910. Exhibited: Copley Gallery, Boston, in Exhibition of the Artist's work, 1913; Rhode Island School of Design in Exhibition of the Artist's work, 1913; Guild of Boston Artists, 1915; M. Knoedler & Co., New York, in Exhibition of the Artist's work, 1920.

Size 18" × 24". Signed lower right.

16. PSYCHE

Painted in 1919. Never before exhibited.

Size 40" × 50". Signed lower left.

17. BLUE AND GOLD

Painted in 1908. Exhibited : Carnegie Institute, 1909 ; Art Institute, Chicago, 1911 ; Pennsylvania Academy, 1912 ; Société Internationale des Beaux-Arts et des Lettres, Paris, 1912 ; Copley Gallery, Boston, in Exhibition of the Artist's work, 1913 ; Rhode Island School of Design in Exhibition of the Artist's work, 1913 ; Panama-Pacific International Exposition, Silver Medal, 1915 ; San Diego Exposition, 1916 ; M. Knoedler & Co., New York, in Exhibition of the Artist's work, 1920.

Size 27" x 34". Signed lower left.

18. LADY IN BLACK

Painted in 1919. Never before exhibited.

Size 40" x 50". Signed lower right.

19. MR. C. E. H.

Painted in 1904. Exhibited : Boston Art Club, 1906 ; Guild of Boston Artists in Exhibition of the Artist's work, 1916.

Size 22" x 30". Signed lower right.

20. THE COMPOTIER (DECORATIVE PANEL)

Painted in 1919. Never before exhibited.

Size 40" x 50". Signed lower right.

21. IN THE VALE OF ENNA (DECORATIVE PANEL)

Painted in 1919. Never before exhibited.

Size 5' 6" x 7' 3". Signed lower right.

22. THE WHITE VASE

Painted in 1915. Exhibited : Guild of Boston Artists in Exhibition of the Artist's work, 1918 ; M. Knoedler & Co., New York, in Exhibition of the Artist's work, 1920.

Size 27" x 34". Signed lower left.

23. THE TEA TABLE

Painted in 1920. Never before exhibited.

Size 25" × 30". Signed lower right.

24. LADY IN FURS

➤ Painted in 1920. Never before exhibited.

Size 27" × 34". Signed lower right.

25. THE ORANGE TREE

Painted in 1920. Never before exhibited.

Size 30" × 36". Signed lower right.

26. THE SEQUIN DRESS

Painted in 1917. Exhibited: Guild of Boston Artists in Exhibition of the Artist's work, 1918; The Waldorf-Astoria, New York, 1920.

Size 33" × 40". Signed lower left.

27. MISS K.

Painted in 1918. Exhibited: Guild of Boston Artists in Exhibition of the Artist's work, 1918.

Size 30" × 36". Signed lower right.

28. MISS M.

Painted in 1920. Never before exhibited.

Size 30" × 36". Signed lower right.

29. ON THE RIVER BANK

Painted in 1908. Exhibited: Pennsylvania Academy, 1908; St. Botolph Club, 1910; Société Internationale des Beaux-Arts et des Lettres, Paris, 1912; Copley Gallery, Boston, in Exhibition of the Artist's work, 1913; Rhode Island School of Design in Exhibition of the Artist's work, 1913;

Panama-Pacific International Exposition, Silver Medal, 1915. Owned by Museum of Fine Arts, Boston.

Size 27" × 34". Signed lower left.

30. THE RIPPLING BROOK

Painted in 1909. Exhibited : Pennsylvania Academy, 1910 ; Copley Gallery, Boston, in Exhibition of the Artist's work, 1913 ; Rhode Island School of Design, in Exhibition of the Artist's work, 1913.

Size 18" × 24". Signed lower right.

31. BOY ON ROCKS

Painted in 1916. Exhibited : Guild of Boston Artists in Exhibition of the Artist's work, 1918.

Size 18" × 24". Signed lower left.

32. GERMAN IRIS

Painted in 1920. Never before exhibited.

Size 25" × 30". Signed lower right.

33. NAIADS

Painted in 1920. Never before exhibited.

Size 33" × 46". Signed lower right.

34. BRIDE AND GROOM NO. II

Painted in 1916. Exhibited : Guild of Boston Artists in Exhibition of the Artist's work, 1918 ; M. Knoedler & Co., New York, in Exhibition of the Artist's work, 1920.

Size 14" × 19". Signed lower right.

WATER COLORS

35. FOUNTAIN, VILLA NAZIONALE, NAPLES

Painted in 1910. Exhibited: Guild of Boston Artists in Exhibition of the Artist's work, 1915; American Water Color Society, New York, 1917; American Federation of Arts, Rotary Exhibition, 1917; Pennsylvania Academy, 1918; M. Knoedler & Co., New York, in Exhibition of the Artist's work, 1920.

Size 11" × 14½". Signed lower left.

36. TO THE MONTE PINCIO, ROME

Painted in 1910. Exhibited: Guild of Boston Artists in Exhibition of the Artist's work, 1915; M. Knoedler & Co., New York, in Exhibition of the Artist's work, 1920.

Size 11" × 14¾". Signed lower centre.

37. ON THE MOLO, VENICE

Painted in 1910. Exhibited: Guild of Boston Artists in Exhibition of the Artist's work, 1915; M. Knoedler & Co., New York, in Exhibition of the Artist's work, 1920.

Size 11" × 14½". Signed lower right.

38. GIBRALTAR

Painted in 1910. Exhibited: Guild of Boston Artists in Exhibition of the Artist's work, 1915; M. Knoedler & Co., New York, in Exhibition of the Artist's work, 1920.

Size 10¾" × 15". Signed lower right.

39. COMO

➤ Painted in 1910. Exhibited: Guild of Boston Artists in Exhibition of the Artist's work, 1915; M. Knoedler & Co., New York, in Exhibition of the Artist's work, 1920.

Size 13" × 15". Signed lower left.

40. OLD WILLOW

Painted in 1910. Exhibited: Guild of Boston Artists in Exhibition of the Artist's work, 1915 ; M. Knoedler & Co., New York, in Exhibition of the Artist's work, 1920.

Size 11' × 13¼". Signed lower right.

41. ON THE LIVING-PORCH

Painted in 1918. Exhibited: Guild of Boston Artists in Exhibition of the Artist's work, 1918 ; M. Knoedler & Co., New York, in Exhibition of the Artist's work, 1920.

Size 11¼" × 15¼". Signed lower right.

42. BOY BATHER

Painted in 1916. Exhibited: Guild of Boston Artists in Exhibition of the Artist's work, 1918 ; M. Knoedler & Co., New York, in Exhibition of the Artist's work, 1920.

Size 10' × 14½". Signed lower left.

43. IN THE GARDEN

Painted in 1920. Exhibited: M. Knoedler & Co., New York, in Exhibition of the Artist's work, 1920.

Size 11' × 14¾". Signed lower right.

44. MOUNTAIN STREAM

Painted in 1920. Never before exhibited.

Size 18' × 24". Signed lower right.

45. PEDLARS AT GIBRALTAR

Painted in 1909. Exhibited: American Water Color Society, New York, 1909 ; Pennsylvania Academy, 1909 ; Guild of Boston Artists in Exhibition of the Artist's work, 1918. Owned by Melville M. Bigelow, Esq.

Size 10' × 14". Signed upper right.

46. GEESE

Painted in 1910. Exhibited: Guild of Boston Artists in Exhibition of the Artist's work, 1918; American Water Color Society, New York, 1919; American Federation of Arts, Rotary Exhibition, 1919.

Size $16\frac{1}{2}'' \times 19\frac{1}{2}''$. Signed lower right.

47. POPLARS

Painted in 1916. Never before exhibited.

Size $11\frac{3}{4}'' \times 15\frac{3}{4}''$. Signed lower right.

48. WEST GLOUCESTER

Painted in 1920. Never before exhibited.

Size $11\frac{1}{2}'' \times 15''$. Signed lower right.

49. SUNLIGHT

Painted in 1920. Never before exhibited.

Size $12'' \times 15''$. Signed lower right.

50. BOYS BATHING

Painted in 1920. Never before exhibited.

Size $11\frac{1}{2}'' \times 13\frac{3}{4}''$. Signed lower right.

ILLUSTRATIONS

Yellow

Vermillion

Blue

Vermillion

Blue

Black velvet

Pinkish white

Black



No. 2

Green rug



No. 3



No. 4



No. 5



No. 6



No. 7



No. 8



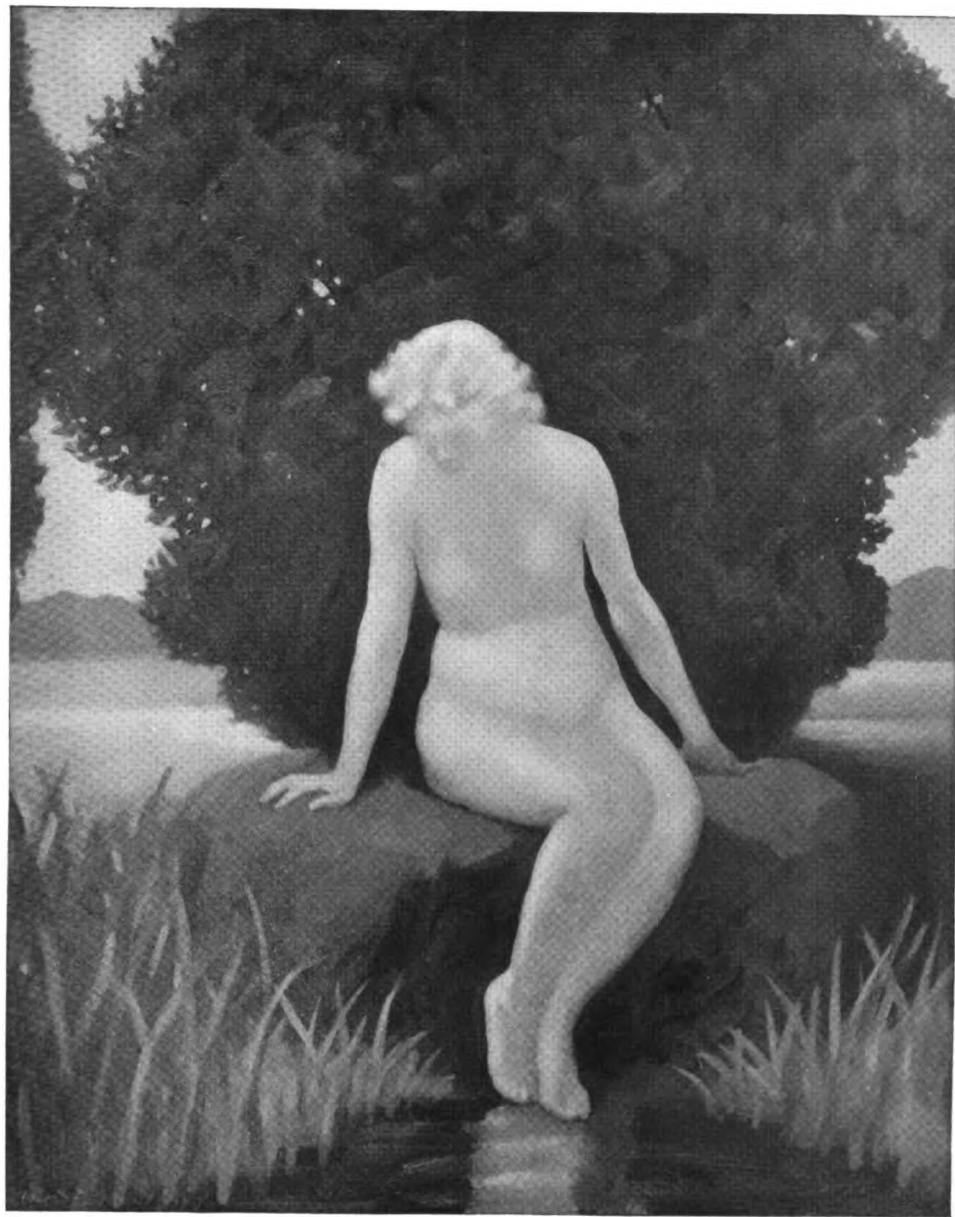
No. 9



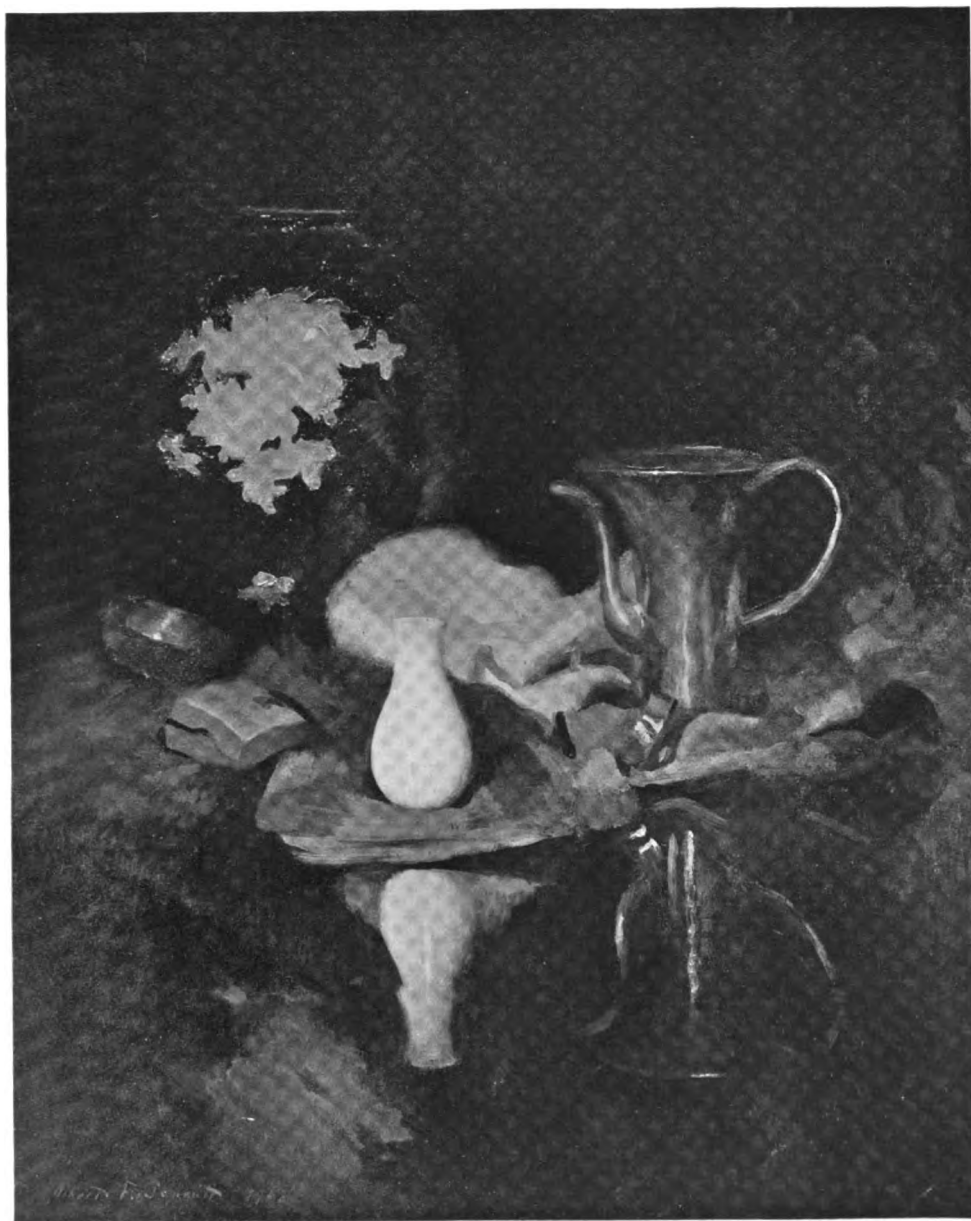
No. 11



No. 14



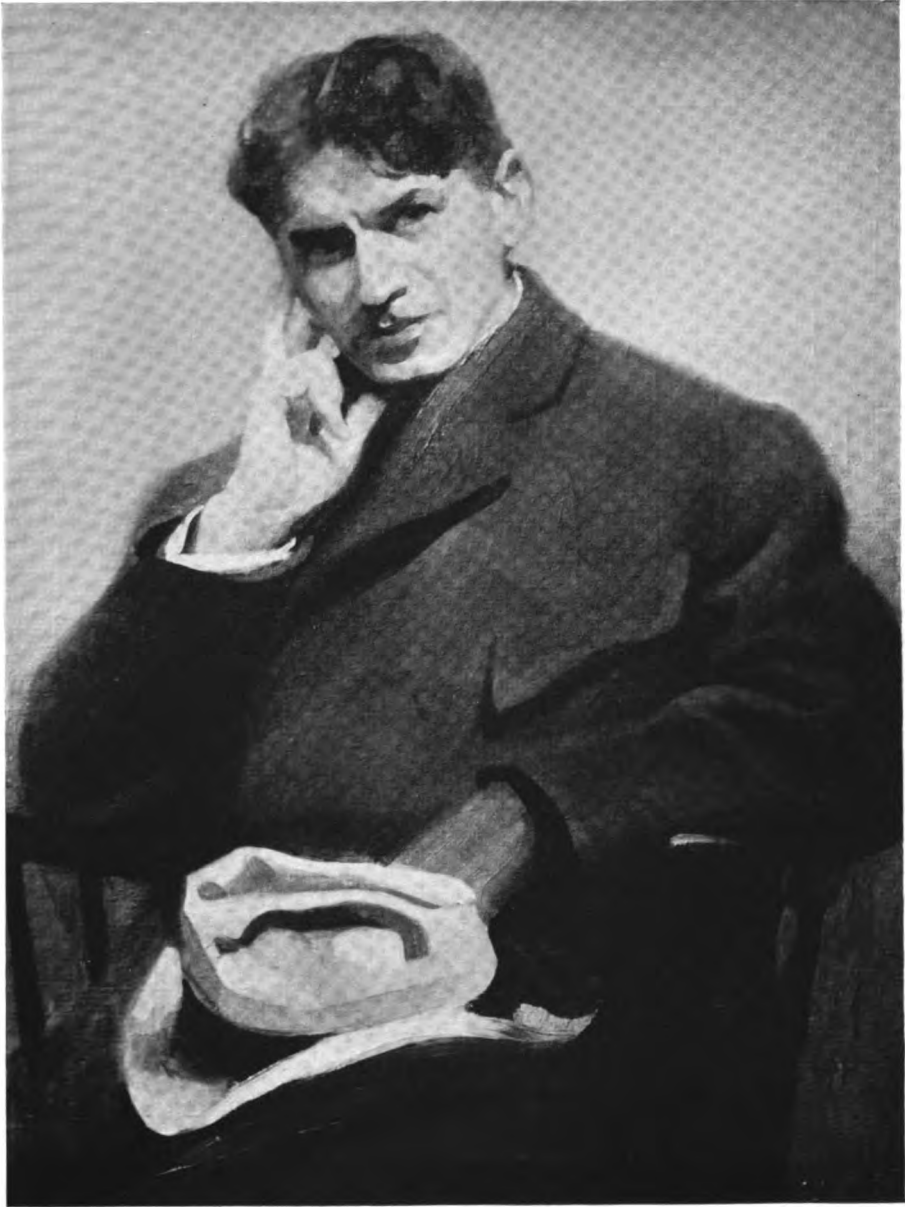
No. 16



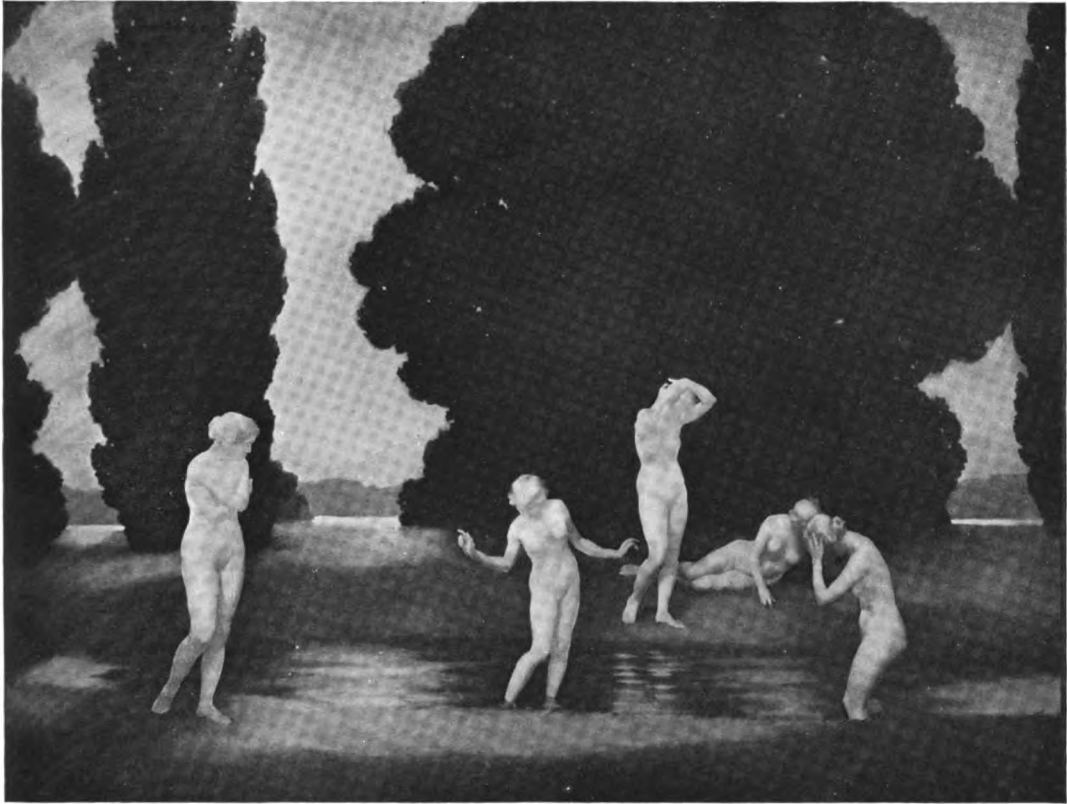
No. 17



No. 18



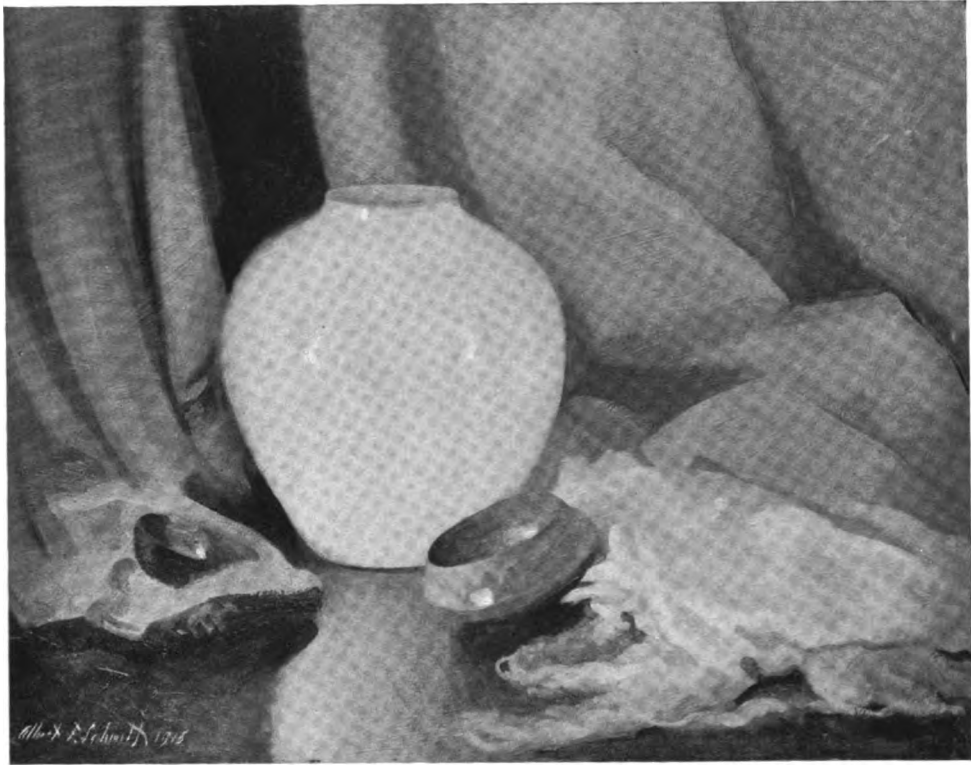
No. 19



No. 21



No. 21 (Detail)



No. 22



No. 26



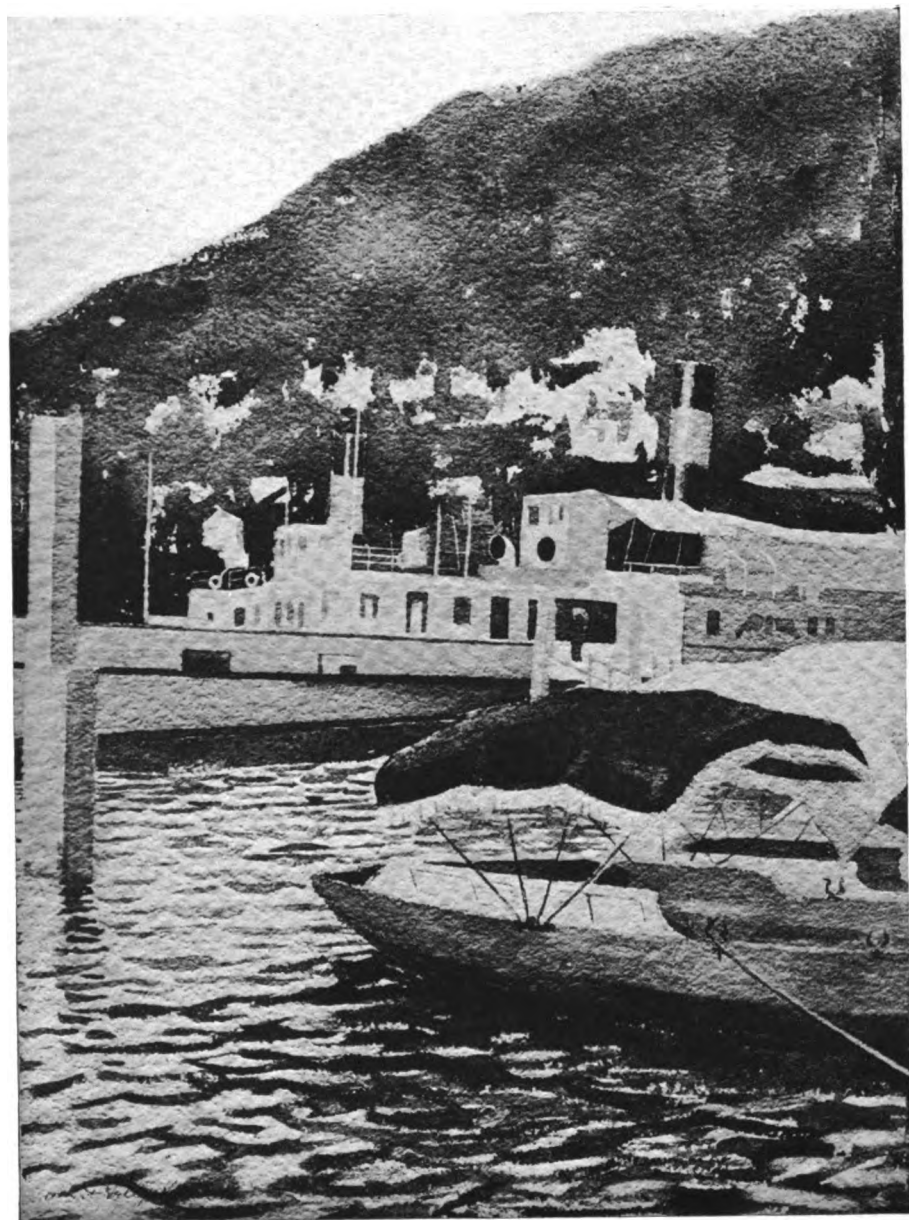
No. 27



No. 29



No. 35



No. 39

1875



This book should be returned to the Library on or before the last date stamped below.

A fine is incurred by retaining it beyond the specified time.

Please return promptly.

4283 B74

Albert Felix Schmitt exhibition, he
Fine Arts Library ATL2111



3 2044 033 564 24

FINE ARTS
WIDENER
APR 06 2007
SEP 10 2007
CANCELLED

4283 B74

Boston Art Club

Albert F. Schmitt exhibition

DATE

ISSUED TO

JAN 12 '68

BINDERY

4283
B74

